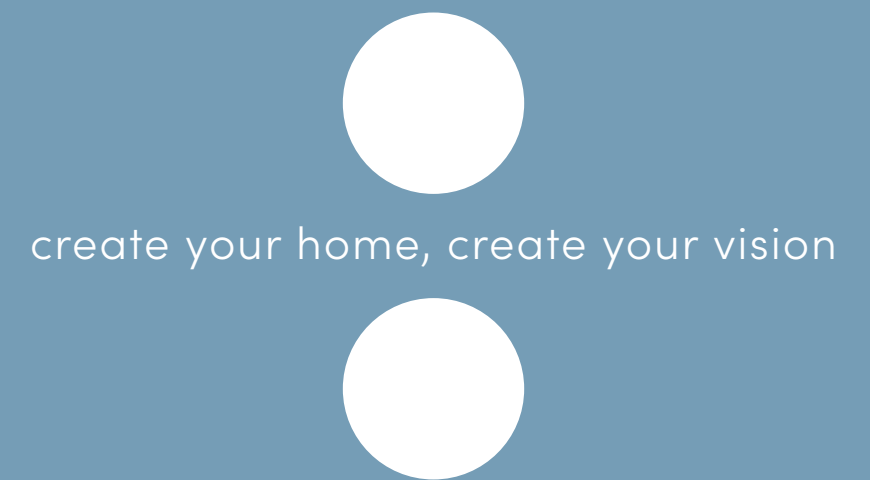




vision



bbf:



create your home, create your vision

• vision

**EACH LUXURY
APARTMENT IS SET
BEAUTIFULLY WITH
BREATHTAKING
PANORAMIC
MOUNTAINS
AND CITY VIEWS**

Meticulously designed with smart space arrangements that deliver pure comfort and style. Residents will enjoy the opulence of spacious living areas with floor to ceiling windows that allow natural light to flow through the space giving it that sense of freedom.



**THESE HOMES
ARE DESIGNED
WITH THE BEST
HIGH QUALITY
MATERIALS**

and high standards of finish, where premium aesthetics fuse with elevated comfort and high spec functionality. Each unique penthouse boasts effortless luxury that is further enhanced by uncompromised panoramic views of the mountains and the city that will definitely inspire your body, mind and soul. Welcome to a dream come true.



major benefits

- Contemporary residence in a tranquil area
- 900 meters to crystal clear waters with golden sand
- Within close proximity to 5 star hotels: Apollonia and Four Seasons
- Common swimming pool, gym, and covered parking

- High ceilings (3.15 meters)
- Floor to ceiling windows
- Top standards of finish
- Under floor heating and central VRV conditioning
- Penthouses with private roof terraces and swimming pools



:location

**THIS IS
A PERFECT
LOCATION
TO LIVE, WORK
AND PLAY**

A city that provides outstanding modern infrastructures for all necessary amenities from luxury five star hotels offering fine dining and high end boutiques to gorgeous beaches and cafes located right on the water. Take a peaceful stroll to the Limassol's stunning coastline where you can experience an open air quaint venues by the sea. Make your dream home come true because your destination has a new address. Enjoy a luxurious apartment in one of the most peaceful prestigious areas but yet only a short distance to the vibrant enticing city, stunning coastline and thriving business hub. Experience a lifestyle of effortless luxury at your doorstep, what more could one as for.



- 1 Pizza Hut
- 2 Swing Latina Dance & Fitness Studio
- 3 Limassol's Olympic Swimming Pool
- 4 Filippas Papadopoulos Pharmacy
- 5 The Garden Restaurant
- 6 Starbucks
- 7 Ocean Basket
- 8 Costa Coffee
- 9 Plus Discount Market
- 10 Cyprus Post Office
- 11 Christina Metaxa Pharmacy
- 12 Sigma Bakery
- 13 Pet Shop
- 14 Slavyanka Russian supermarket
- 15 Atlantica Miramare
- 16 The Royal Apollonia 5-star



- SYMBOLS
- Hotels
 - Marina
 - Highway
 - Office of BBF

•communal swimming pool



• exterior



• exterior

**900 meters to crystal clear waters
with golden sand**



• exterior

**Within close proximity
to 5 star hotels: Apollonia
and Four Seasons**



• exterior

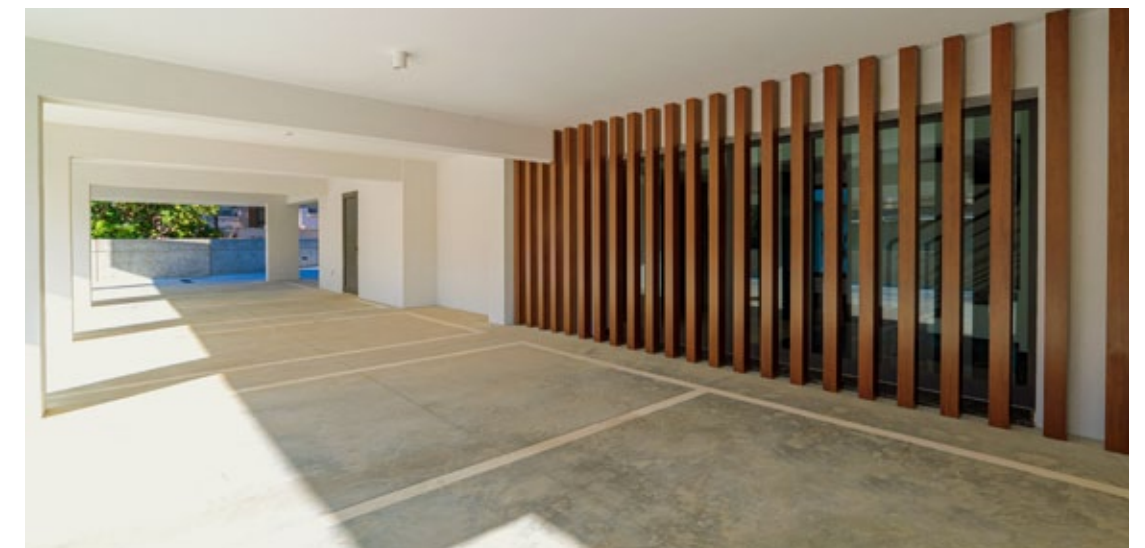
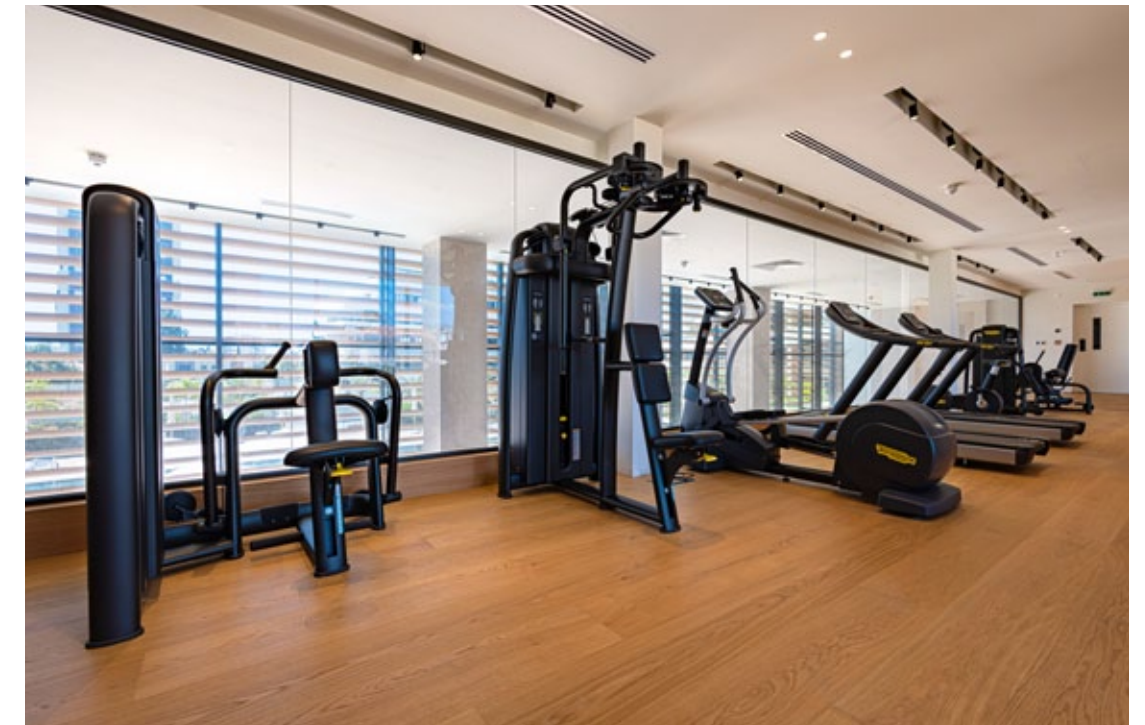


• exterior



• resident facilities

The building offers outdoor swimming pool, secure covered parking, a fully equipped gym



choice of properties



block a

UNIT N°	PROPERTY TYPE	BED-ROOMS	BATH-ROOMS	PRIVATE POOLS	NO OF PARK SPACES	INDOOR AREA M²	COV. VERAN-DA M²	AUXILIARY AREA M²		ROOF TERRACE	STORAGE	TOTAL AREA M²
								FLOOR	AREA			
101	Apartment	2	2		1	90.08	23.16				3.93	117.17
102	Apartment	S	1		1	45.10	8.50				3.47	57.07
103	Apartment	1	1		1	55.00	8.90				4.92	68.82
104	Apartment	3	3		1	119.09	27.59				5.00	151.68
201	Apartment	2	2		1	87.20	21.40				4.30	112.90
202	Apartment	S	1		1	45.10	8.50				3.89	57.49
203	Apartment	1	1		1	55.00	8.90				4.04	67.94
204	Apartment	3	3		1	117.10	25.40				4.84	147.34
301	Apartment	2	2		1	87.20	21.40				3.93	112.53
302	Apartment	2	2		1	89.92	30.81				4.04	124.77
303	Apartment	3	3		1	119.09	27.59				5.53	152.21
401	Penthouse	3	3	YES	1	127.97	49.76	5th	44.56	95.60	5.83	323.72
402	Penthouse	3	3	YES	1	142.89	46.06	5th	37.16	104.20	5.53	335.84

block b

UNIT N°	PROPERTY TYPE	BED-ROOMS	BATH-ROOMS	PRIVATE POOLS	NO OF PARK SPACES	INDOOR AREA M²	COV. VERAN-DA M²	AUXILIARY AREA M²		ROOF TERRACE	STORAGE	TOTAL AREA M²
								FLOOR	AREA			
101	Apartment	2	2		1	90.08	23.16				3.93	117.17
102	Apartment	S	1		1	45.24	9.58				3.47	58.29
103	Apartment	1	1		1	55.39	10.42				4.92	70.73
104	Apartment	3	3		1	119.09	27.59				5.00	151.68
201	Apartment	2	2		1	90.08	23.16				4.30	117.54
202	Apartment	S	1		1	45.24	9.58				3.89	58.71
203	Apartment	1	1		1	55.39	10.42				4.04	69.85
204	Apartment	3	3		1	119.09	27.59				4.84	151.52
301	Apartment	2	2		1	90.08	23.16				3.93	117.17
302	Apartment	2	2		1	89.92	30.81				4.04	124.77
303	Apartment	3	3		1	119.09	27.59				5.53	152.21
401	Penthouse	3	3	YES	1	127.97	49.76	5th	44.56	95.60	5.83	323.72
402	Penthouse	3	3	YES	1	142.89	46.06	5th	37.16	104.20	5.53	335.84

NOTE: the areas stated above may slightly differ upon issuance of relevant authority permits

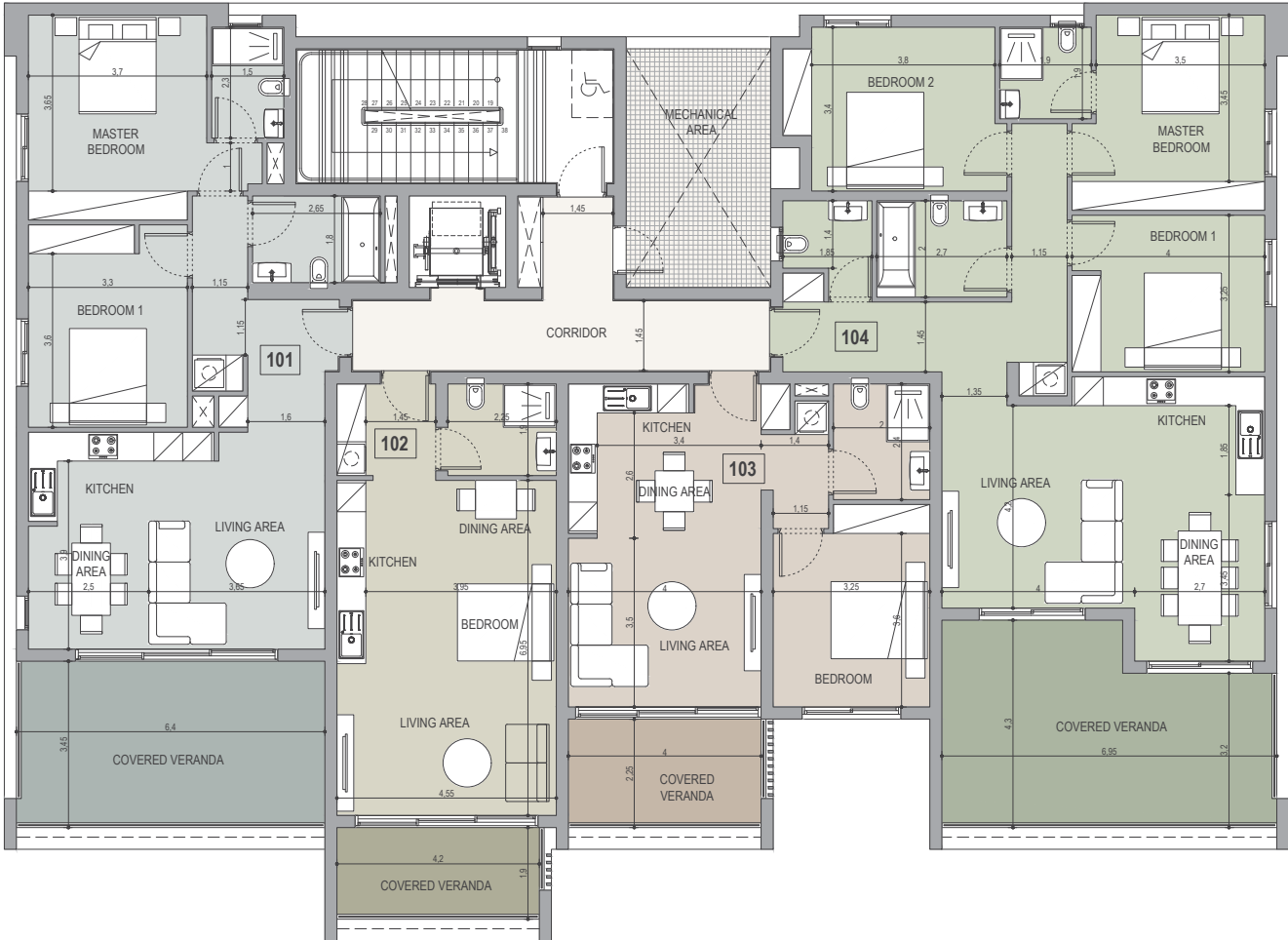
master plan

ground floor



:block a

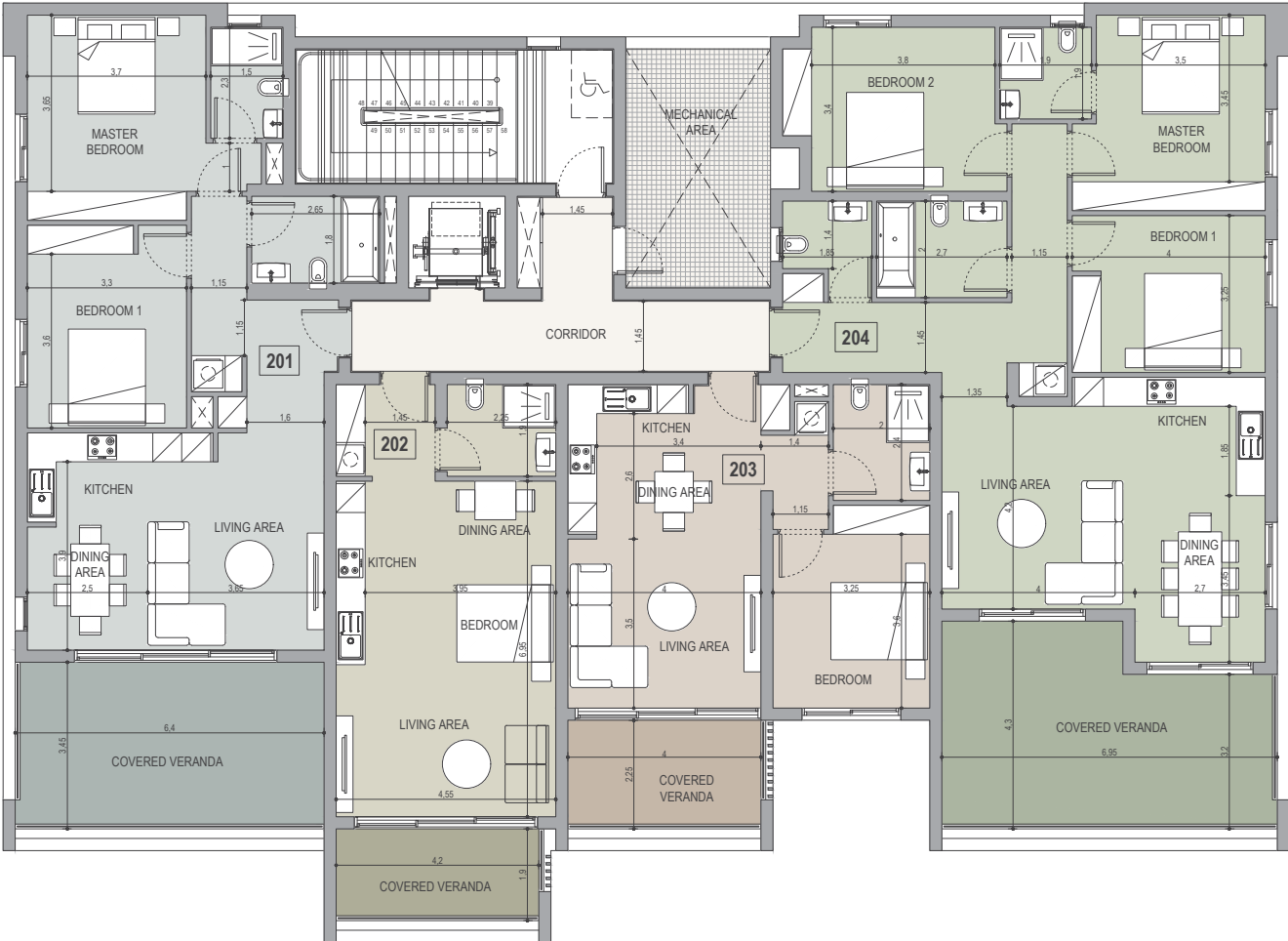
floor 1



UNIT Nº	TOTAL AREA M²
101	117.17
102	57.07
103	68.82
104	151.68

:block a

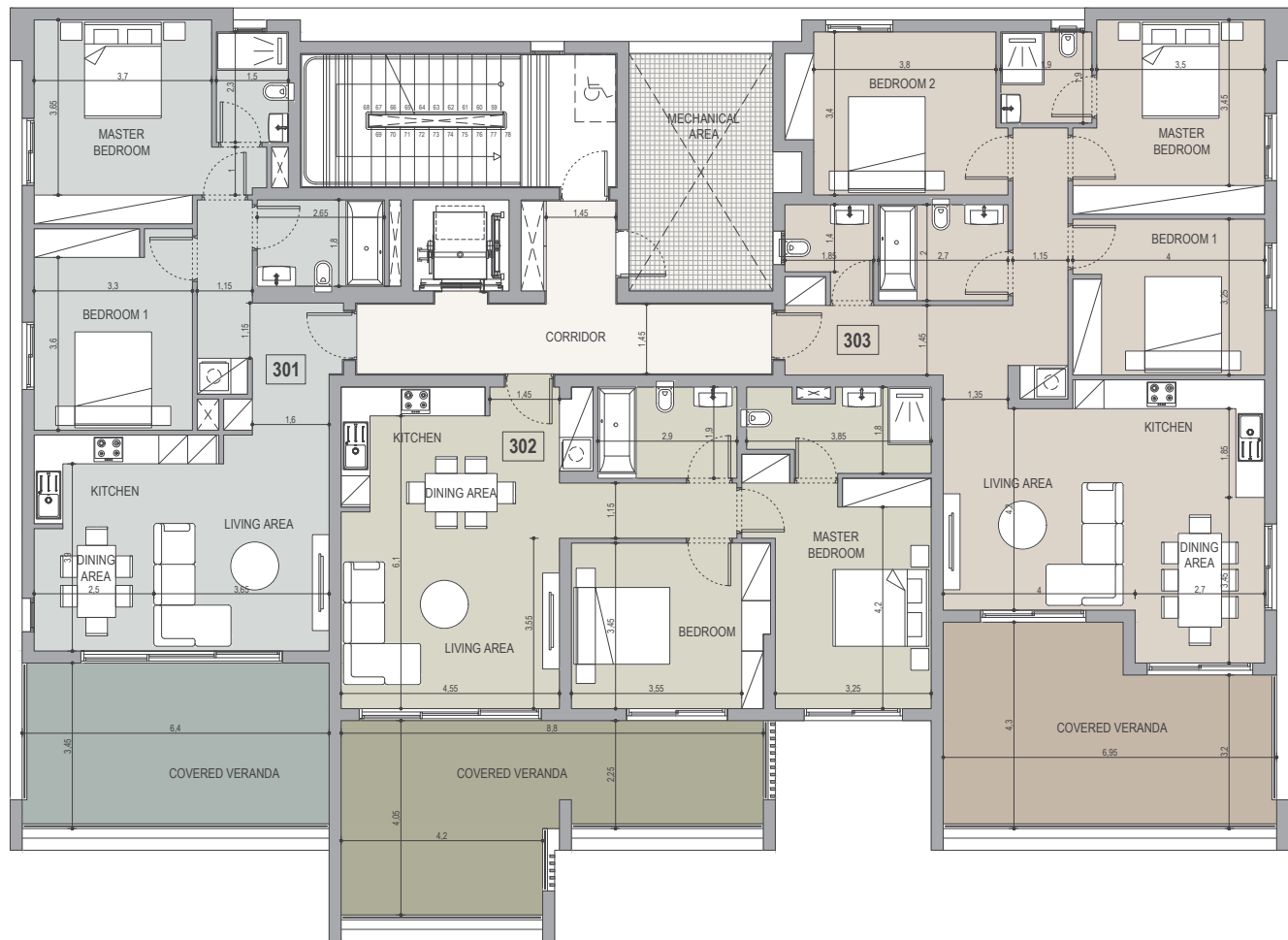
floor 2



UNIT Nº	TOTAL AREA M²
201	112.90
202	57.49
203	67.94
204	147.34

:block a

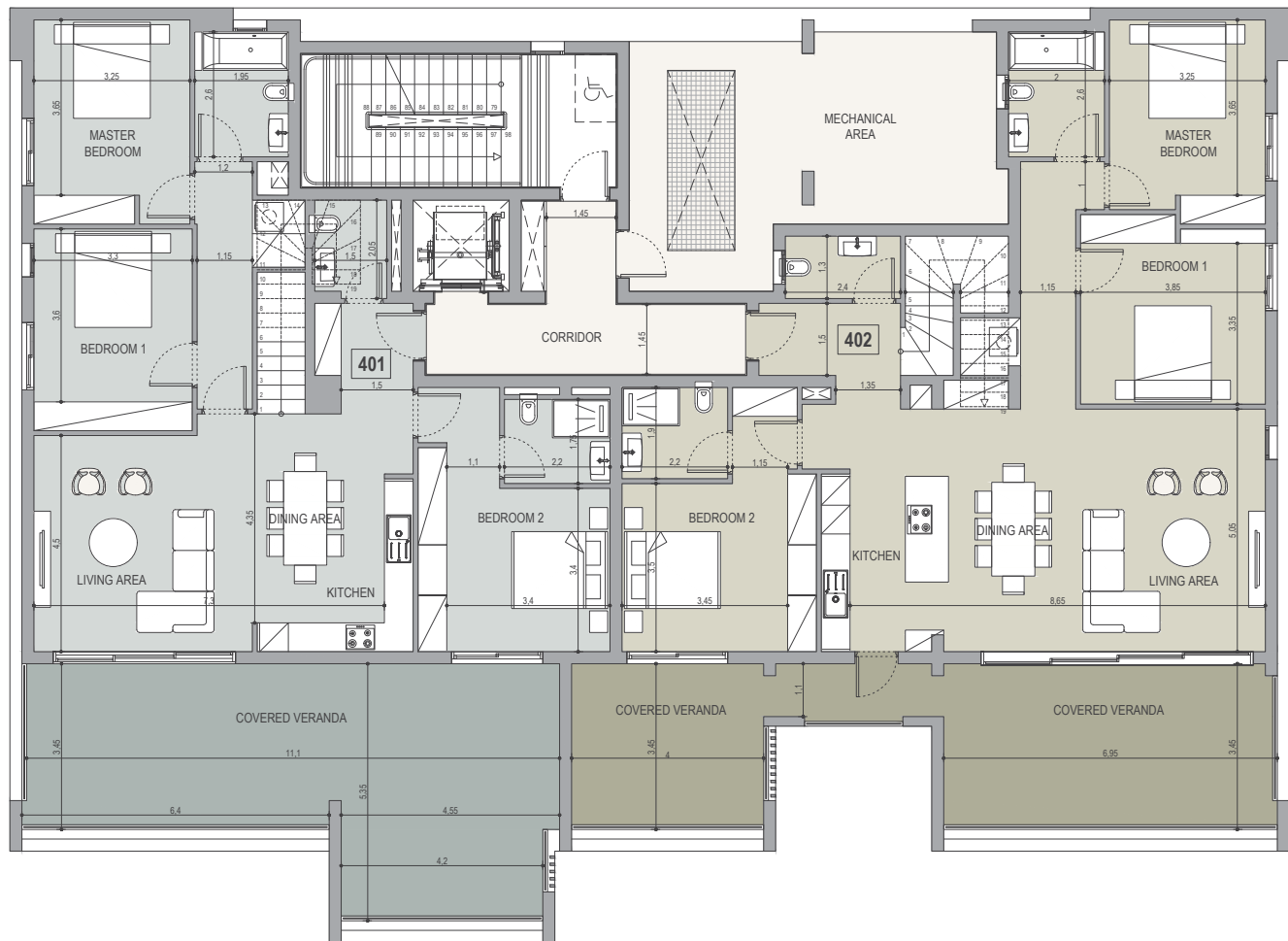
floor 3



UNIT Nº	TOTAL AREA M ²
301	112.53
302	124.77
303	152.21

:block a

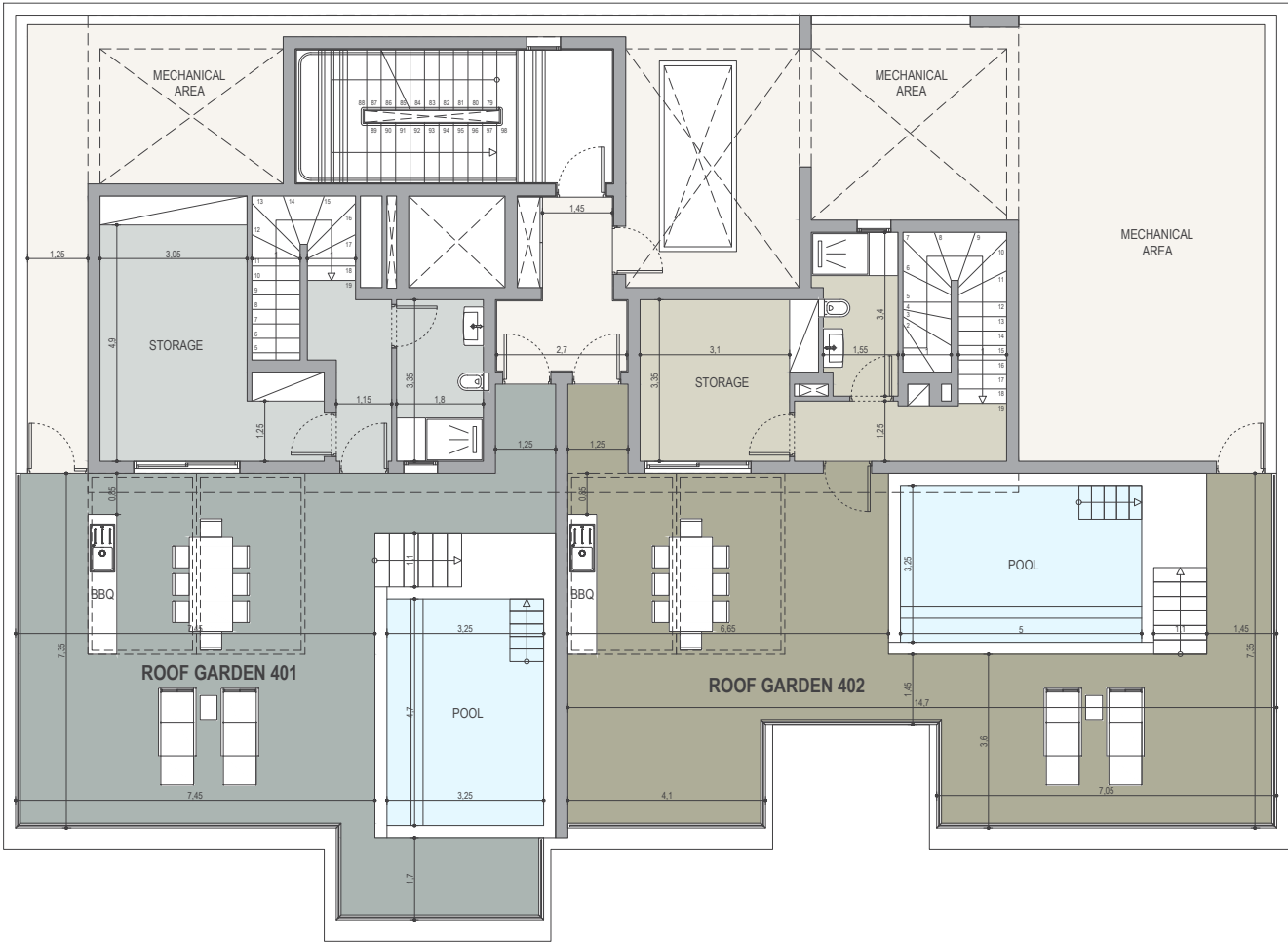
floor 4



UNIT Nº	TOTAL AREA M ²
401	323.72
402	335.84

:block a

roof garden

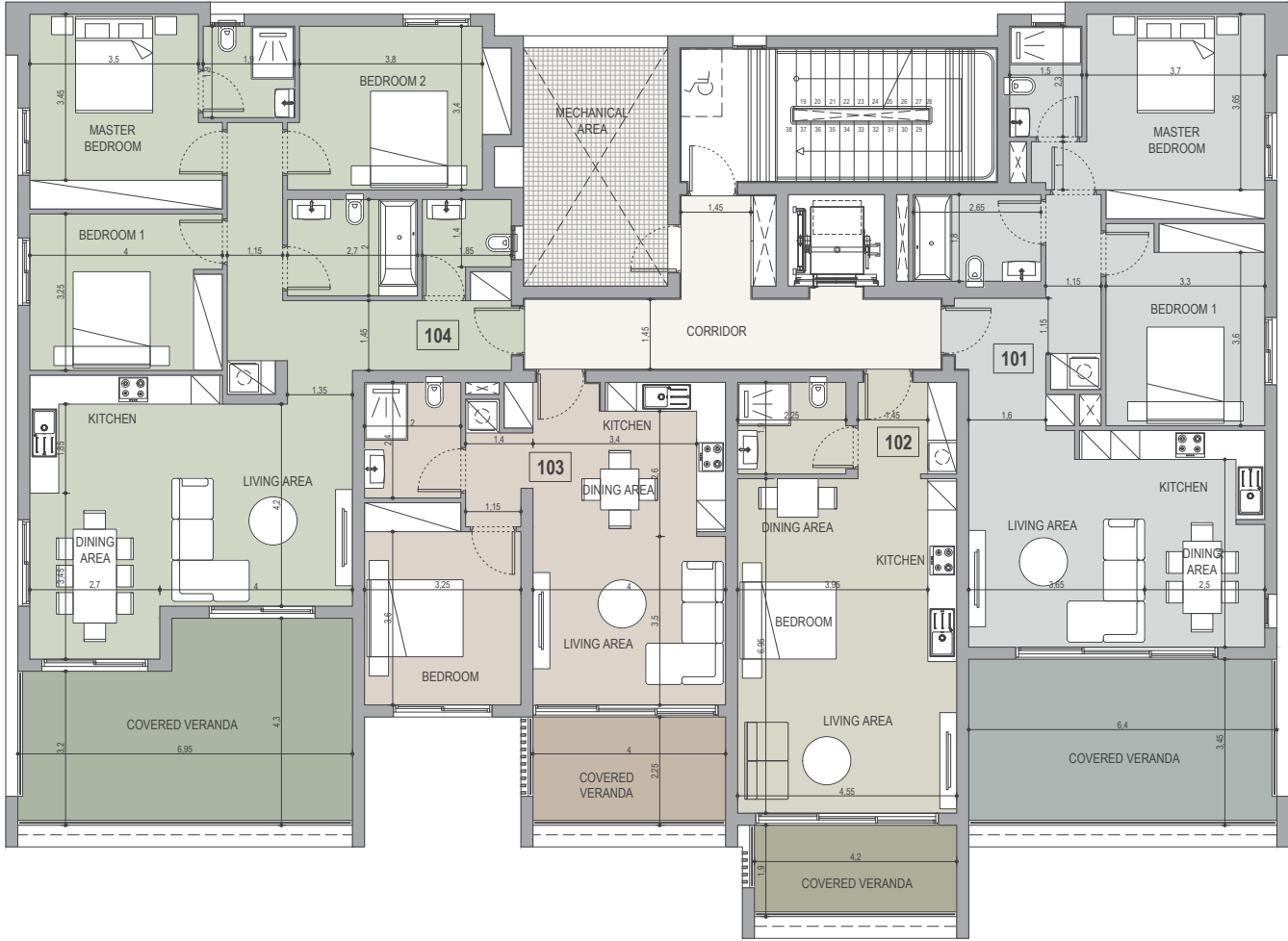


UNIT N°	ROOF TERRACE M²
401	95.60
402	104.20



:block b

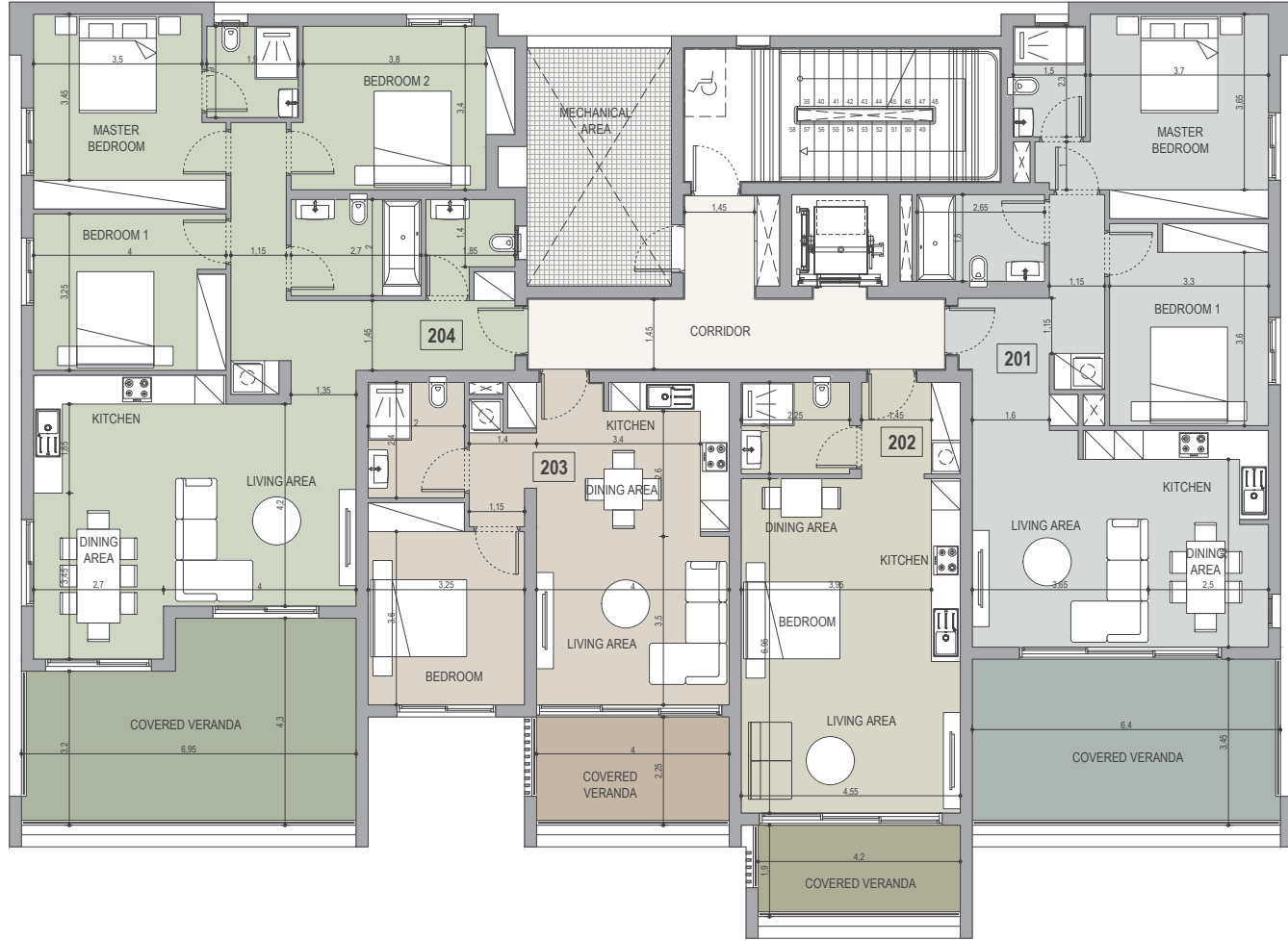
floor 1



UNIT N°	TOTAL AREA M ²
101	117.17
102	58.29
103	70.73
104	151.68

:block b

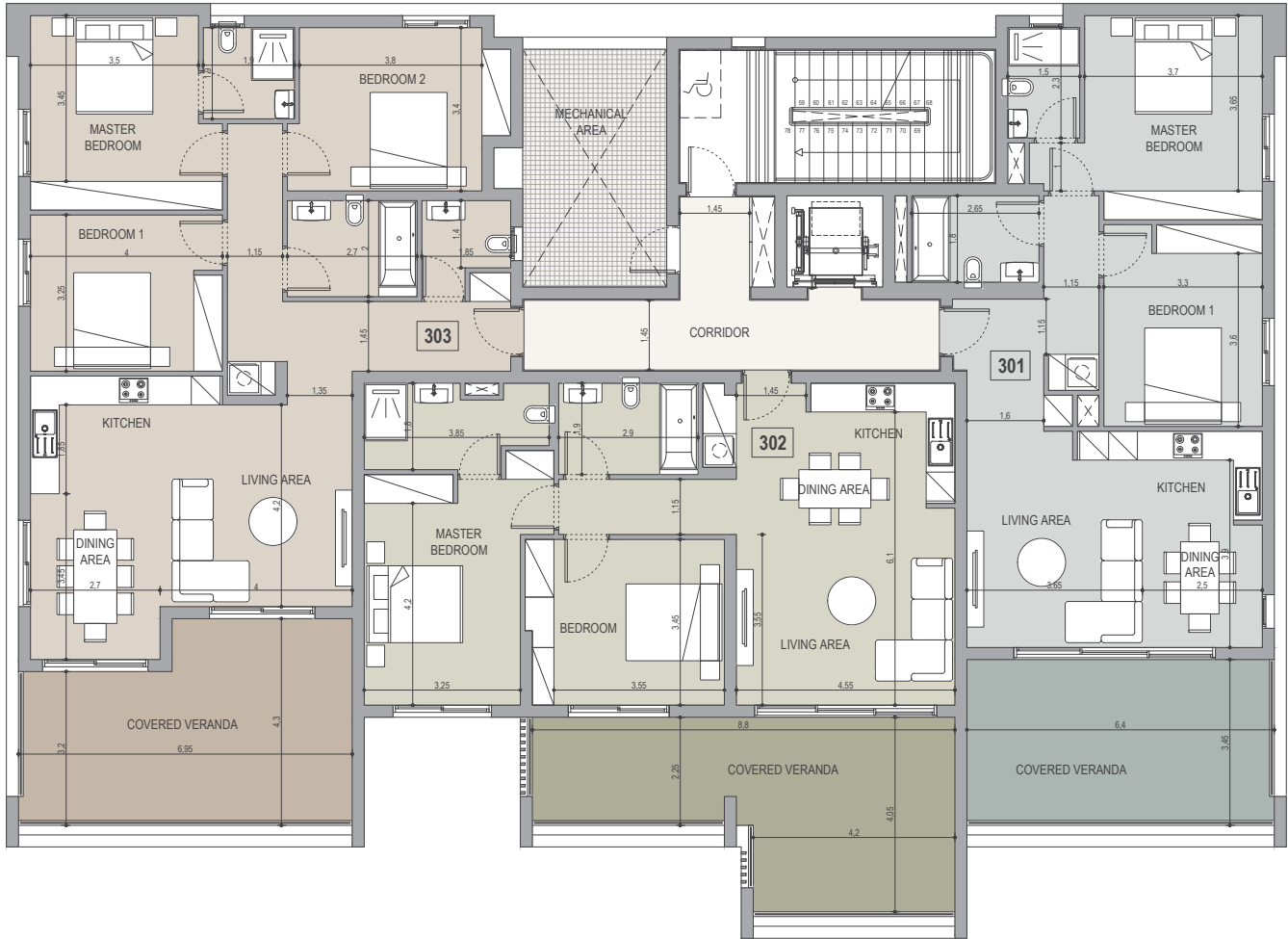
floor 2



UNIT N°	TOTAL AREA M ²
201	117.54
202	58.71
203	69.85
204	151.52

:block b

floor 3



UNIT N°	TOTAL AREA M²
301	117.17
302	124.77
303	152.21

:block b

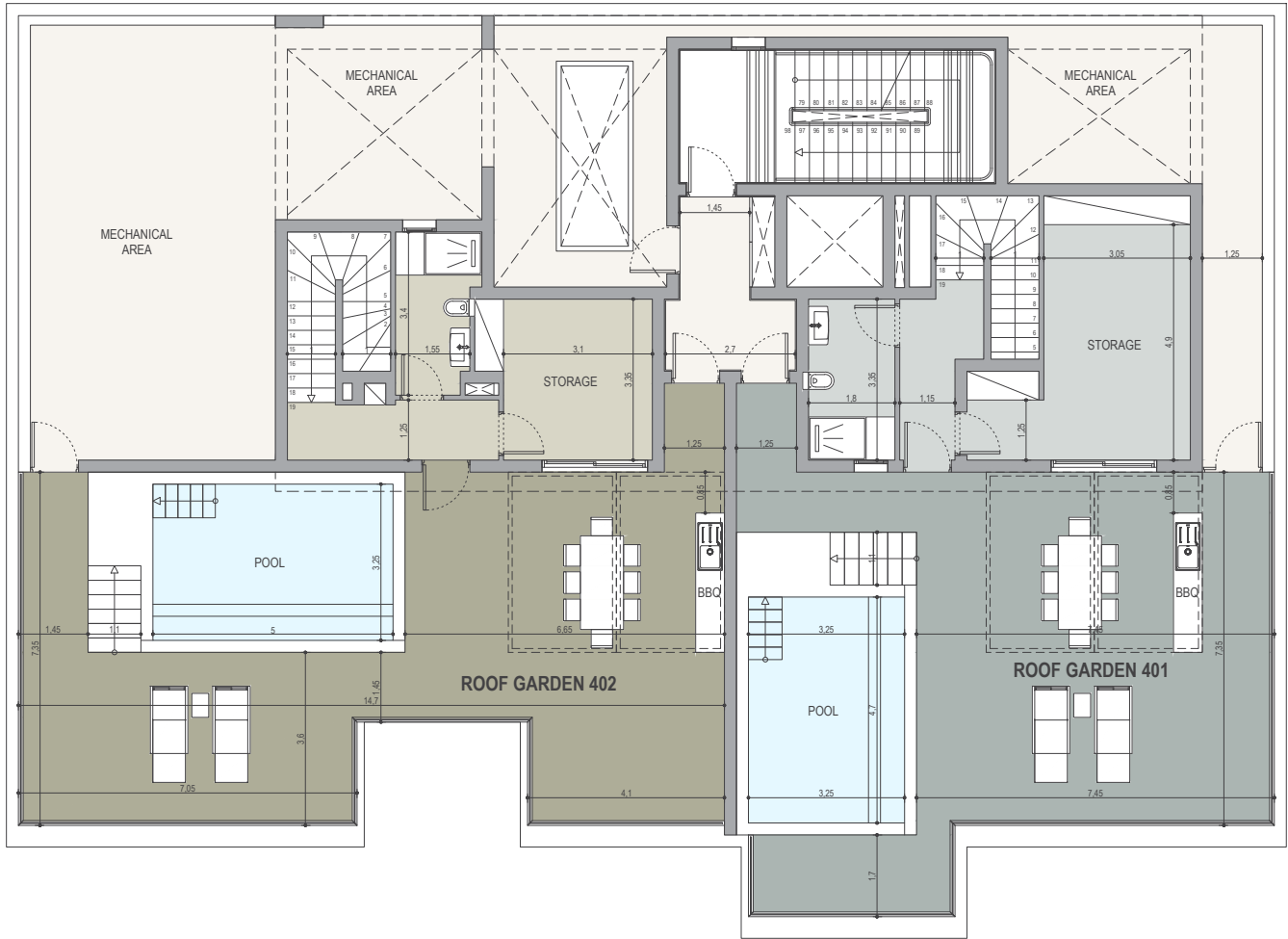
floor 4



UNIT N°	TOTAL AREA M²
401	323.72
402	335.84

:block b

roof plan



UNIT N°	ROOF TERRACE M²
401	95.60
402	104.20





signature finishes

bbf:prime

EVERY PROPERTY IS DELIVERED WITH SIGNATURE TOP STANDARD FINISHES:

- Fully completed finishings
- Semi-solid parquet floors in each room
- Marble floor and walls in the toilets and bathrooms
- High ceilings (3.15 m)
- Security and fireproof entrance doors
- Water heated floors
- Air conditioning
- High standard sanitary ware from European brands
- Thermal aluminum window frames with double glazing
- High standard kitchen cabinets
- High standard wardrobes from European brands
- Soft closers
- Door stoppers

NOTE: movable furniture, home appliances & interior items are extras



•signature finishes



bbf:penthouses

bbf® has reimagined the idea of what a penthouse should represent. The signature penthouses of bbf® are featured almost in all apartment developments and represent the best choice for a demanding and sophisticated customer who expects the best of comfort, style and privacy.

- Sizable roof space
- Stone floors
- Marble tiled swimming pool with Jacuzzi
- Barbecue
- Pergolas for shading

NOTE: movable furniture, home appliances & interior items are extras



bbf: Head office

Head Office in Limassol

28 Ampelakion Street, Germasogeia,
4046 Limassol, P.O.Box 70649, Cyprus

Office: +357 25 315 318
info@bbf.com

bbf: Greece

Office in Athens

88 Vasilissis Sofias Avenue,
115 28 Athens, Greece

Office: +30 210 775 5388
greece@bbf.com



bbf.com