

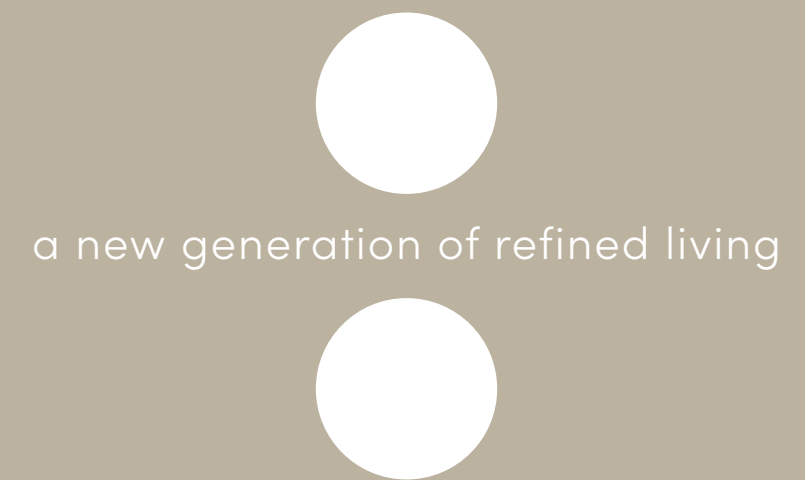


## cypress grove



[bbf.com](https://bbf.com)

bbf:



# :cypress grove

**A STUNNING  
SERENE SUBURBAN  
DEVELOPMENT  
LOCATED IN THE MOST  
BEAUTIFUL PARTS  
OF THE ISLAND**

Characterised by architectural splendor and modern design combined with simplicity and elegance seamlessly reflects an affluent Mediterranean lifestyle. Cypress Grove is a unique development that boasts twelve, 2-bedroom spacious luxurious apartments and grandeur penthouses with private roof gardens.



**EACH HOME IS  
DESIGNED WITH  
INTELLIGENT,  
EFFICIENT AND  
FUNCTIONAL  
LIVING AND  
DINING SPACES**

that offer quality in every detail and inspire an opulent lifestyle. Harmlessly combining contemporary interior and exterior beauty through well thought out design projects nothing less than absolute comfort and beauty. Each residence is designed with carefully thought out functional spaces and complemented with meticulous attention to detail offering high standards of finish and indulgent surroundings. Cypress Grove is your daily entrance to a safe and peaceful haven that offers a comforting place of refuge and rest.





# major benefits

- One of Limassol's most sought — after areas Agios Tychonas
- Tranquil surroundings
- Common swimming pool
- Modern architecture
- 2 minutes' drive to Four Seasons Hotel

- Spacious layouts
- Luxurious design and comfort
- Provision for under floor heating
- Penthouses with private roof gardens
- High standards of finish
- Landscaped gardens





• unobstructed views





# •introduction

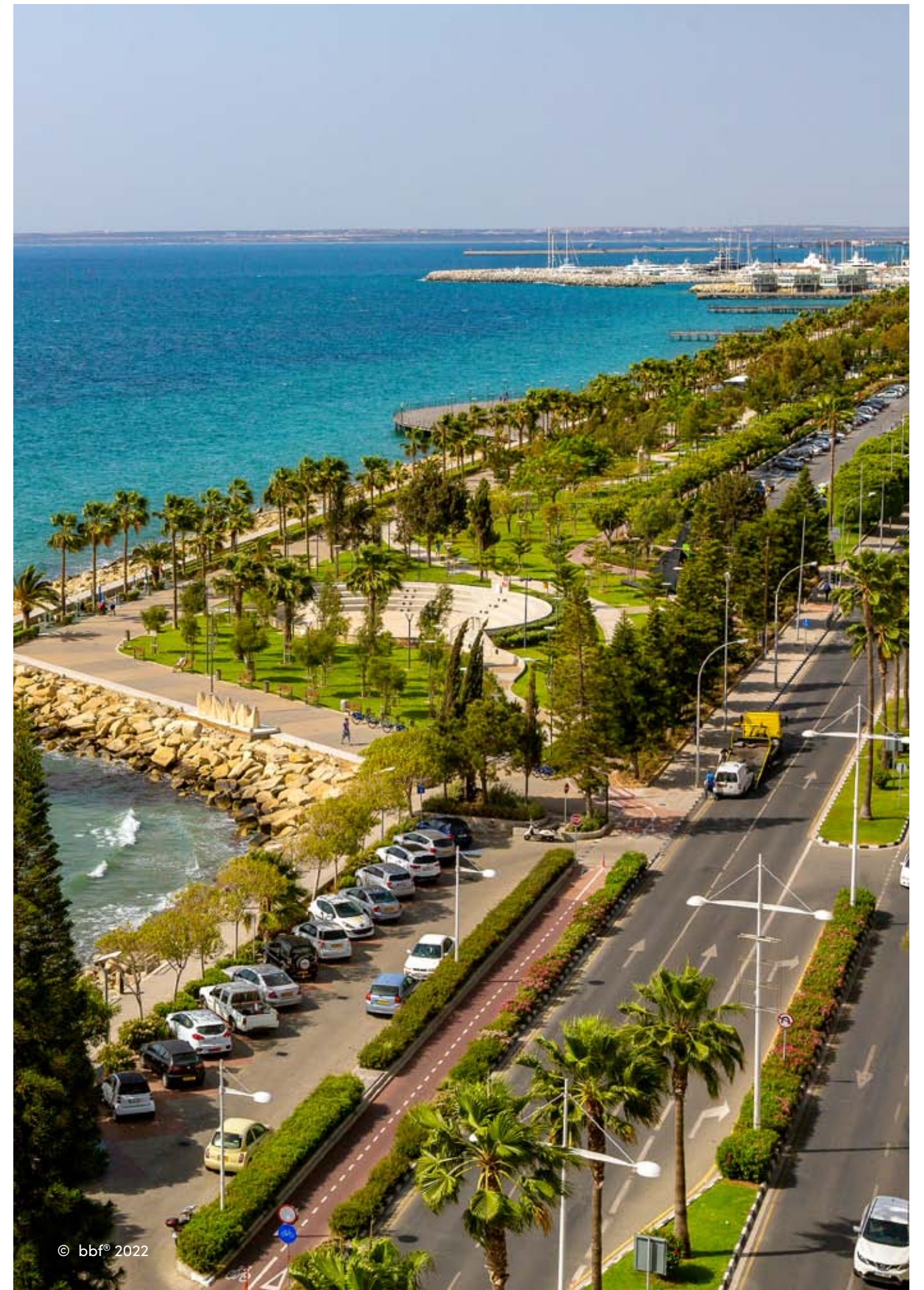
## **LIMASSOL COMBINES THE FAST PACE OF A CITY AND THE COMFORT OF A FIRST-CLASS MEDITERRANEAN RESORT**

Limassol is the second largest urban area in Cyprus, located on the southern coast, with an urban population of 160,000 – 176,700.

Limassol was built between two ancient cities – Amathus and Kourion – and during Byzantine rule it was known as Neapolis (new town). Limassol's historical centre is located around its medieval Limassol Castle and the Old Port. Today the city spreads along the Mediterranean coast and has extended much farther than the castle and port, with its suburbs stretching along the coast to Amathus.

The history of Limassol is largely associated with the Third Crusade of Richard the Lionheart, who arrived in Limassol in 1191 on his way to the Holy Land. He arrested the renegade Byzantine Greek governor of Cyprus Limassol, Isaac Komnenos, taking over the entire island, and bringing the long Byzantine dominion of Cyprus to an end. Richard also celebrated his marriage with Berengaria who had received the crown as queen of England in Limassol. Richard destroyed Amathus and the inhabitants were transferred to Limassol.

Limassol has a Subtropical-Mediterranean climate with warm to hot and dry summers as well as very mild winters, separated by short springs and autumns which are generally pleasant.





# :location

**AGIOS TYCHONAS IS ONE OF THE MOST SOUGHT-AFTER AREAS IN LIMASSOL BOASTING MAGNIFICENT UNOBSTRUCTED SEA AND CITY VIEWS THAT OFFER A SENSE OF PRIVACY AND EXCLUSIVITY FROM EVERY APARTMENT**

A suburban tranquil area with beautiful serene surroundings offering nothing less than a pure and relaxed lifestyle for family living. On the outside of your retreat, lies an exceptional location situated in one of the most well-known and elite areas in Limassol. Unrivalled proximity to the city centre as well as immediate access to all modern first class infrastructures and facilities. This spectacular location takes you to the sea front and the most luxurious hotels in Limassol Four Seasons and Amara as well as fine dining and high end boutiques in a matter of minutes. The sea front area welcomes you with lush sparkling waters and a beautiful promenade for a leisurely stroll.



# • exterior

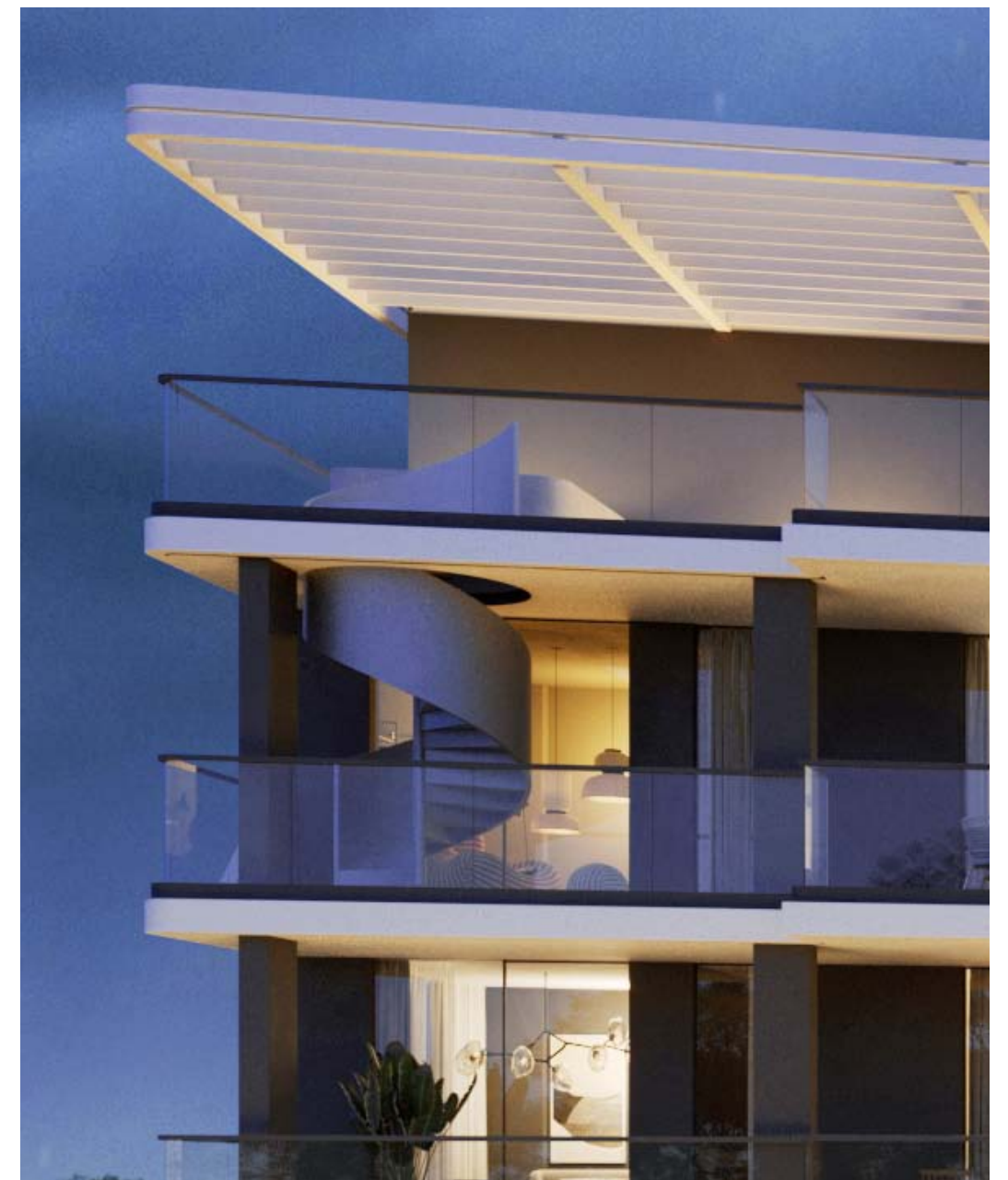




# • exterior



Tranquil surroundings,  
common swimming pool,  
codern architecture





# • exterior





• exterior

Penthouses with private  
roof gardens





choice of properties



UNIT N°	PROPERTY TYPE	N° OF PARKING SPACES	BEDROOMS	BATH-ROOMS	INDOOR AREA M²	COV. VERANDA M²	UNCOV. VERANDA M2	ROOF TERRACE	STORAGE	COMMON AREA PER UNIT M²	TOTAL AREA M²
101	Apartment	1	2	2	87.60	30.30			5.00	13.65	136.55
102	Apartment	1	2	2	83.80	19.60			5.00	11.97	120.37
103	Apartment	1	2	2	84.40	19.60			5.00	12.04	121.04
104	Apartment	1	2	2	87.60	28.25			5.00	13.42	134.27
201	Apartment	1	2	2	87.60	30.30			5.00	13.65	136.55
202	Apartment	1	2	2	83.80	19.60			5.00	11.97	120.37
203	Apartment	1	2	2	84.40	19.60			5.00	12.04	121.04
204	Apartment	1	2	2	87.60	28.25			5.00	13.42	134.27
301	Apartment	1	2	2	87.60	30.30			5.00	13.65	136.55
302	Apartment	1	2	2	83.80	19.60			5.00	11.97	120.37
303	Apartment	1	2	2	84.40	19.60			5.00	12.04	121.04
304	Apartment	1	2	2	87.60	28.25			5.00	13.42	134.27
401	Penthouse	1	2	3	87.60	25.13	5.19	51.70	5.00	13.06	187.68
402	Penthouse	1	2	3	83.80	14.35	5.21	43.10	5.00	11.37	162.83
403	Penthouse	1	2	3	87.10	14.35	5.21	43.10	5.00	11.73	166.49
404	Penthouse	1	2	3	87.60	23.58	4.67	52.14	5.00	12.88	185.87

NOTE: the areas stated above may slightly differ upon issuance of relevant authority permits



# • floor plans

## Ground Floor

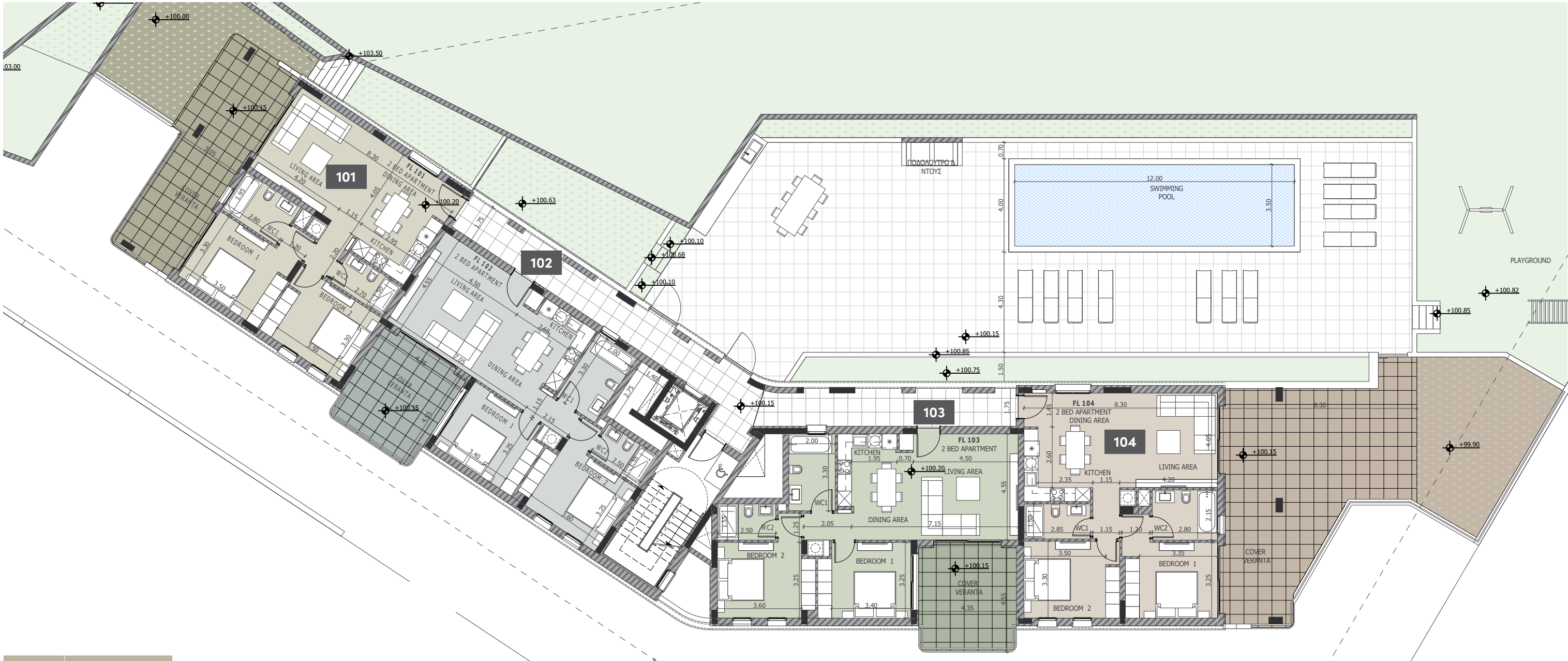




# • floor plans



## 1st Floor



UNIT N°	TOTAL AREA M²
101	136.55
102	120.37
103	121.04
104	134.27

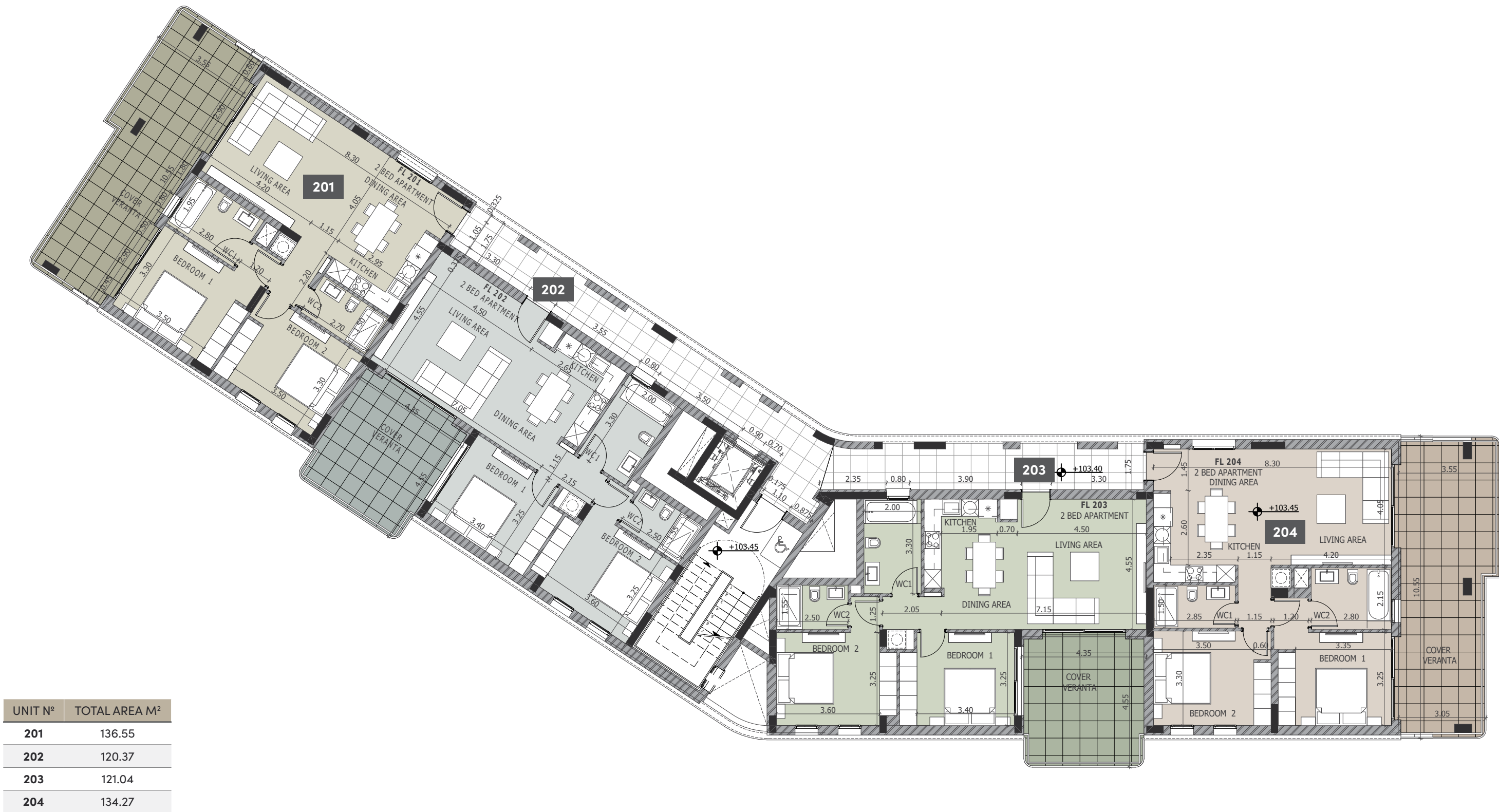
\*Floor plans show approximate measurements only. Exact layout and sizes may vary.



# • floor plans



## 2nd Floor

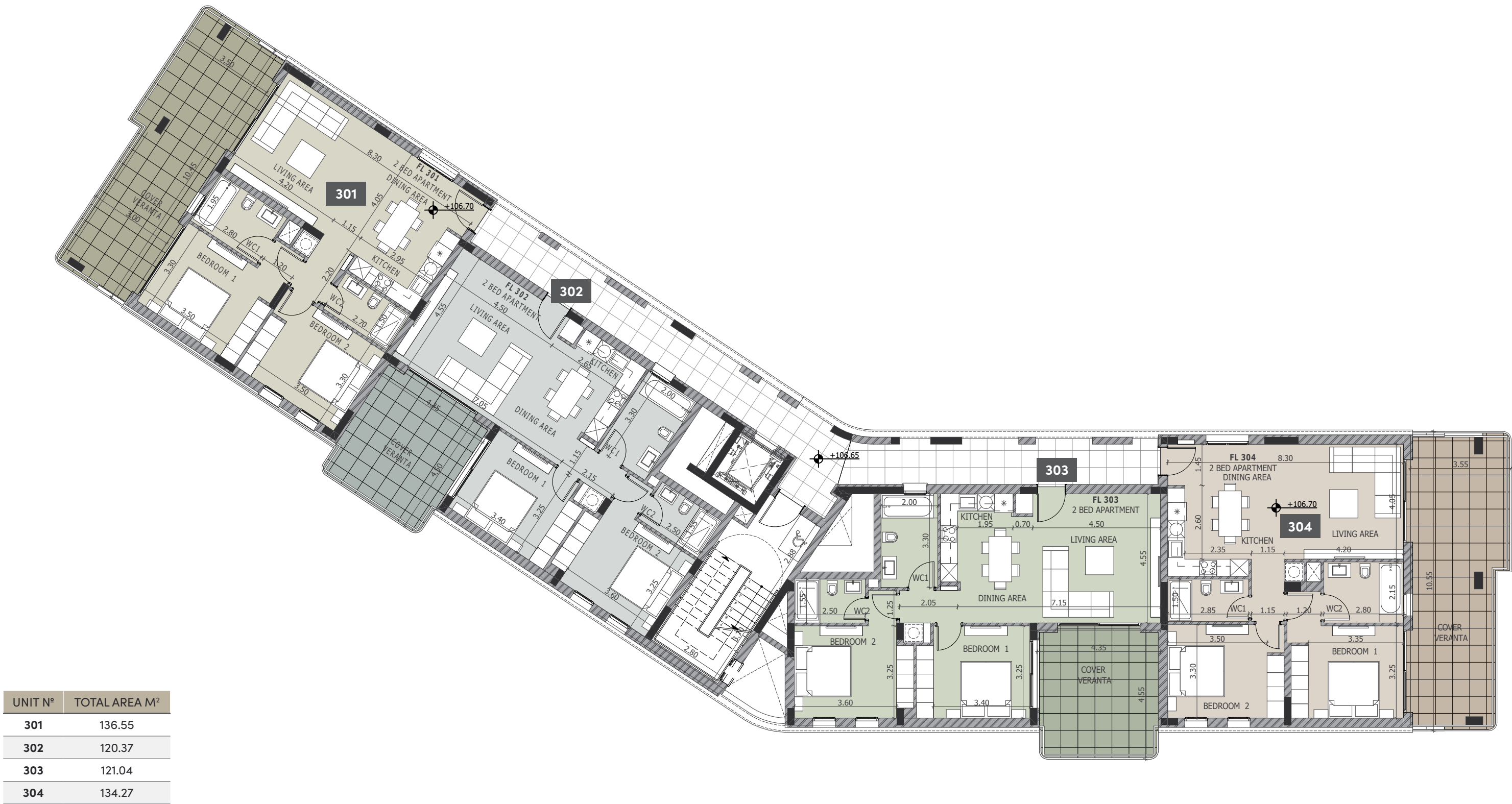




# • floor plans



## 3rd Floor

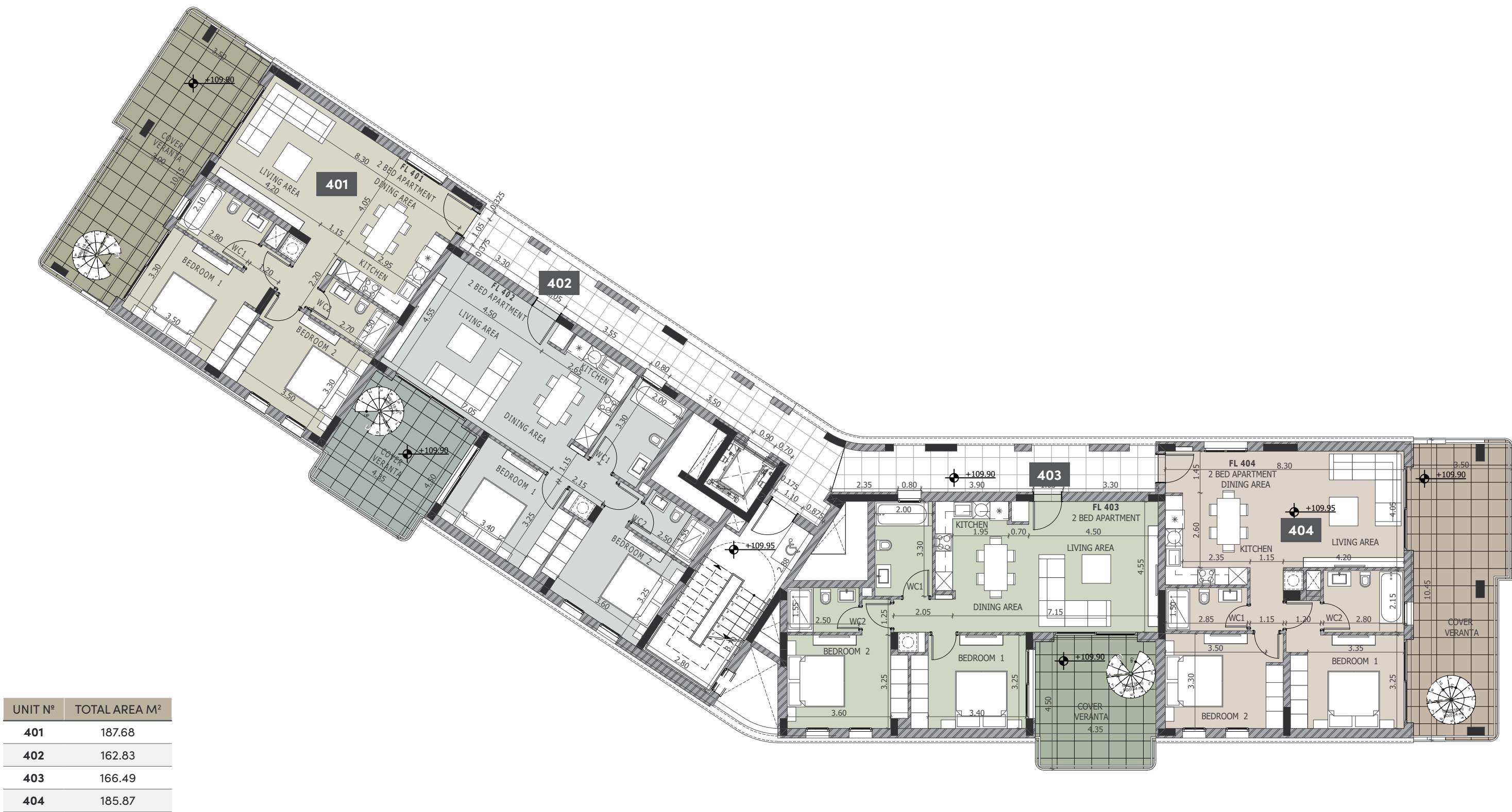




# • floor plans



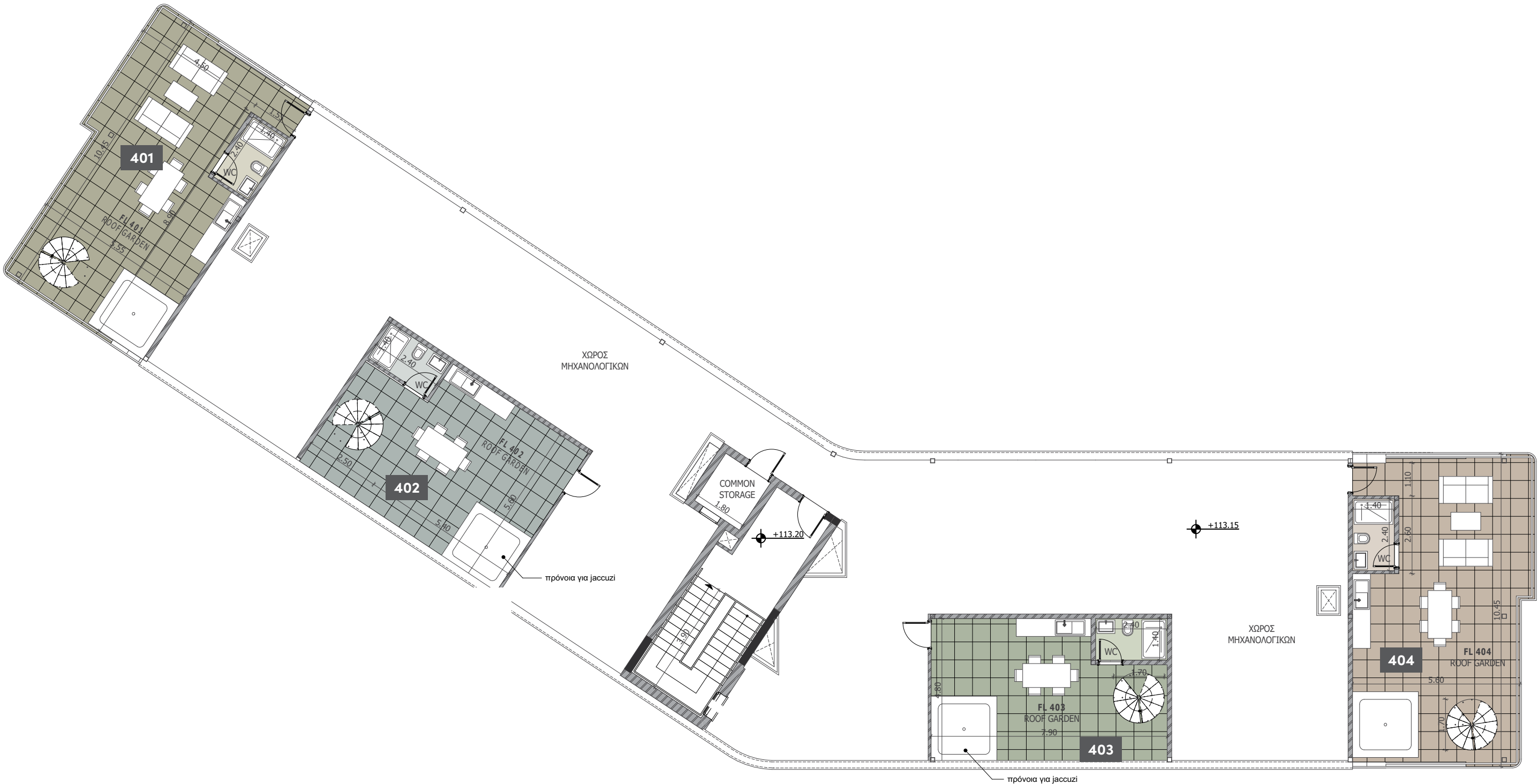
## 4th Floor





# • floor plans

## Roof Garden







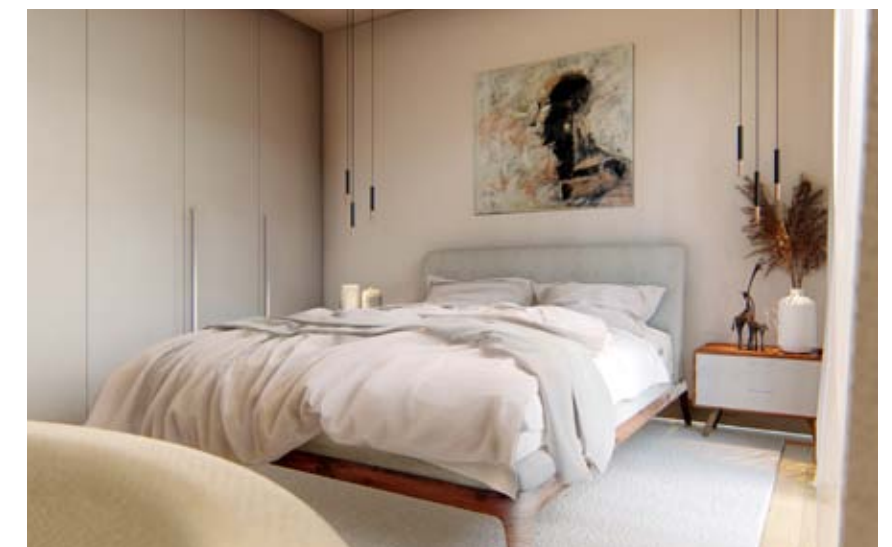
## •signature finishes

bbf:smart

**EVERY PROPERTY IS DELIVERED WITH SIGNATURE TOP STANDARD FINISHES:**

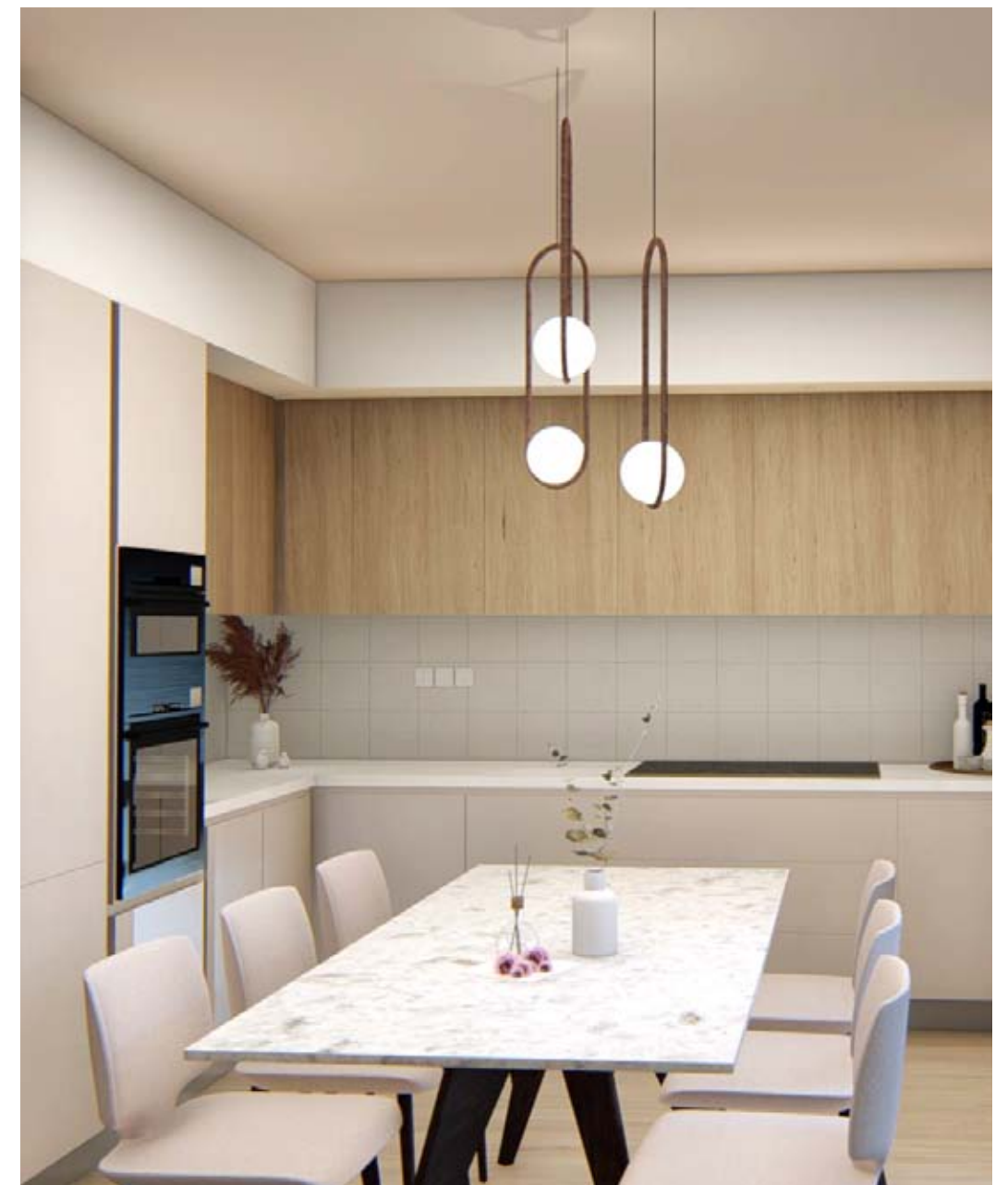
- Laminate parquet in each room
- Quality ceramic tiles in bathrooms and toilets
- Aluminium window frames with double glazing
- High quality entrance doors
- Provisions for split A/C units in all rooms
- Sanitary ware from European brands
- High quality kitchen cabinets and wardrobes
- Artificial granite worktop

**NOTE:** movable furniture, home appliances & interior items are extras





## •signature finishes





# •signature finishes



## bbf: penthouses

bbf® has reimagined the idea of what a penthouse should represent. The signature penthouses of bbf® are featured almost in all apartment developments and represent the best choice for a demanding and sophisticated customer who expects the best of comfort, style and privacy.

- Sizable roof space
- Stone floors
- Provision for jacuzzi
- Barbecue
- Pergolas for shading

**NOTE:** movable furniture, home appliances & interior items are extras





## notes

## YOUR PERSONAL PROPERTY CONSULTANT



## bbf: Head office

### Head Office in Limassol

28 Ampelakion Street, Germasogeia,  
4046 Limassol, P.O.Box 70649, Cyprus

**Office:** +357 25 315 318  
[info@bbf.com](mailto:info@bbf.com)

## bbf: Office in Greece

### Office in Athens

88 Vasilissis Sofias Avenue,  
123111 Athens, Greece

**Office:** +30 210 775 5388  
[greece@bbf.com](mailto:greece@bbf.com)